

100 - 400 Series Manifold Base



Ordering code

100M

-

□F

Series

100M: Base for 100 series
200M: Base for 200 series
300M: Base for 300 series
400M: Base for 400 series

Base numbers

Seal plate ordering code

200M

-

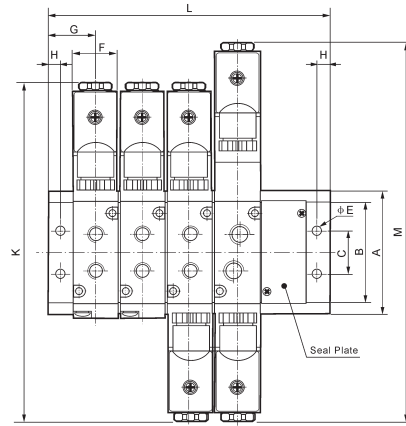
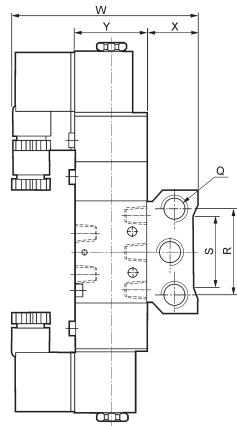
B

Series

100M: For 100 series
200M: For 200 series
300M: For 300 series
400M: For 400 series

Seal plate

Dimensions



Internal diameter/Symbol	A	B	C	E	F	G	H	K	L	M	Q	R	S	W	X	Y
100M-□F	58	44	20	4.2	18.3	19	5	140	$(n-1)*19+38$	155	G1/4	40	30	78.5	25	27
200M-□F	61	51	21	4.3	22.4	23	6	170	$(n-1)*23+46$	189	G1/4	43	32	92.5	26	35
300M-□F	75	65	26	4.5	27.3	27	6	189	$(n-1)*28+54$	208	G3/8	53	48	99	30	40
400M-□F	104	95	32	5.5	34.3	31.5	7	222	$(n-1)*35+63$	243	G1/2	68	67	112	38	50