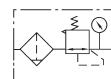


Filter & Regulator AW1000~5000 Series



● Specifications

● Symbol



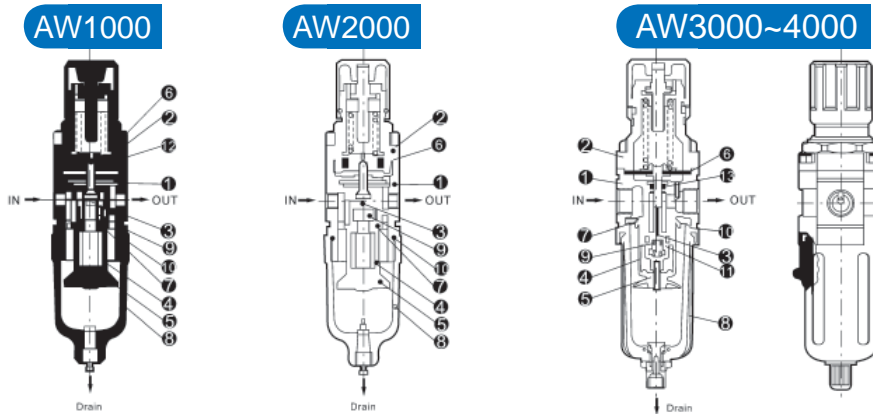
Fluid	Air
Proof pressure	1.5MPa (15kgf/cm ²)
Max. operating pressure	1.0MPa (10kgf/cm ²)
Ambient and fluid temperature	5~60℃
Nominal filtration rating	5 μm 25 μm 50 μm
Bowl material	Polycarbonate
Bowl guard	AW1000~2000 (Not Available) AW3000~5000 (Available)
Set pressure range	AW1000: 0.05~0.7MPa (0.5~7kgf/cm ²) AW2000~5000: 0.05~0.85MPa(0.5~8.5kgf/cm ²)
Regulator construction	Relieving type

Model	Specifications				Accessories		Drain function	Model of AW series with auto drain
	*Rated flow (L/min)	**Port size (G)	Pressure gauge port size	Weight (kg)	Bracket	Pressure gauge		
AW1000-M5	100	M5	1/16	0.09	B120	G27-10-R1	Manual drain	-
AW2000-01	550	1/8	1/8	0.36	B220	G36-10-01		AW2000-01D
AW2000-02		1/4					AW2000-02D	
AW3000-02	2000	1/4	1/8	0.56	B320	G36-10-01	AW3000-02D	
AW3000-03		3/8					AW3000-03D	
AW4000-03	4000	3/8	1/4	1.15	B420	G46-10-02	a.Air shutoff drain b.Manual drain	AW4000-03D
AW4000-04		1/2					AW4000-04D	
AW4000-06	4500	3/4	1/4	1.21	B420	G46-10-02	AW4000-06D	
AW5000-06	5500	3/4	1/4	1.70			AW5000-06D	
AW5000-10		1					AW5000-10D	

*Under the circumstance that the inlet is 0.7MPa(7.1kgf/cm²) and the set pressure is 0.5MPa(5.1kgf/cm²)
**Rc.and NPT port sizes are available.

Filter & Regulator AW1000~5000 Series

Construction



Component parts

NO.	Description	Material			NO.	Description	Material		
		AW1000	AW2000	AW4000			AW1000	AW2000	AW4000
1	Body	Zinc die-cast	Aluminum die-cast		8	Bowl assembly (Bowl guard)	Polycarbonate (Cold rolled steel)		
2	Bonnet	Reinforced nylon		Aluminum die-cast	9	Spring	Stainless steel		
3	Valve assembly	Brass,NBR			10	O-ring	NBR		
4	Filter element	Brass			11	O-ring	NBR		
5	Baffle	POM			12	Hand wheel	Nylon		
6	Diaphragm assembly	NBR			13	O-ring	NBR		
7	Whirlwind blade	POM							

Dimensions

AW1000-2000

AW1000: Max. 3.5
AW2000: Max. 5

AW3000-5000

AW3000: Max. 3.5
AW4000~5000: Max. 5



Model	Port size (G)	A	B	C	D	E	F	G	H	J	K	L	M	N	P
AW1000	M5	25	109.5	50.5	25	26	25	28	30	4.5	6.5	40	2	20.5	28
AW2000	1/8~1/4	40	164.5	78	40	56.8	30	34	43.5	5.4	15.4	55	2.3	33.5	40
AW3000	1/4~3/8	53	211	92.5	53	60.8	39	40	46	6.5	8	53	2.3	42.5	56
AW4000	3/8~1/2	70	262	112	70	70.5	49.2	54	53.5	8.5	10.5	70	2.3	52.5	73
AW4000-06	3/4	75	267	114	70	70.5	49.2	54	55.5	8.5	10.5	70	2.3	52.5	73
AW5000	3/4~1	90	338	116	90	75.5	49.2	54	62	8.5	10.5	70	2.3	52.5	90