

V Series Solenoid Valve



Ordering code

V	-	180	-	4	-	E2	-	C	-	AC110V	-	L	-	BSP
Model		Body width 180: 180mm 220: 220mm 260: 260mm 300: 300mm 460: 460mm		3: Three way 4: Four way		E1: Single coil E2: Double coil		C: The middle position close P: The middle position ventilate R: The middle position exhaust		Coil voltage DC24V AC110V 50Hz/60Hz AC220V 50Hz/60Hz		Electrical entry Blank: DIN connector L: Connector with light E: Blast-proof type (sheet 1) W: Lead wire type		Pipe thread Blank: PT thread BSP: BSP thread NPT: NPT thread

Specifications

Model	Port size	Position and way NO.	Port size	Fluid	Operating pressure range	Proof pressure	Effective area	Answer time	Operating temperature	Coil voltage	Power consumption	Allowable voltage	Insulation class
V-180-3E1,E2	6A	3/2 way	G1/8"	Air	0.15~0.8MPa	1.0MPa	12mm ² (CV=0.67)	30ms	5~50℃	AC: 110V, 220V (50/60)Hz DC: 24V	AC: 3.7/3.1VA DC: 2.9W	±10%	Class F
V-180-4E1,E2		5/2 way											
V-180-4E2C.P.R		5/3 way											
V-220-3E1,E2	8A	3/2 way	PT-1/4	Air	0.2~0.7MPa	1.0MPa	18mm ² (CV=1.00)	30ms	5~50℃	AC: 110V, 220V (50/60)Hz DC: 24V	AC: 6/4.9VA DC: 2.5W	±10%	Class F
V-220-4E1,E2		5/2 way											
V-220-4E2C.P.R		5/3 way											
V-260-4E1	8A	5/2 way	PT-1/4	Air	0.2~0.7MPa	1.0MPa	18mm ² (CV=1.00)	40ms	5~50℃	AC: 110V, 220V (50/60)Hz DC: 24V	AC: 6/4.9VA DC: 2.5W	±10%	Class F
V-260-4E2		5/3 way											
V-260-4E2C.P.R		5/3 way											
V-300-3E1,E2	10A	3/2 way	PT-3/8	Air	0.2~0.7MPa	1.0MPa	35mm ² (CV=1.96)	40ms	5~50℃	AC: 110V, 220V (50/60)Hz DC: 24V	AC: 6/4.9VA DC: 2.5W	±10%	Class F
V-300-4E1,E2		5/2 way											
V-300-4E2C.P.R		5/3 way											
V-460-3E1	15A	3/2 way	G-1/2	Air	0.2~0.7MPa	1.05MPa	50mm ² (CV=2.79)	50ms	5~50℃	AC: 110V, 220V (50/60)Hz DC: 24V	AC: 6/4.9VA DC: 2.5W	±10%	Class F
V-460-4E1,E2		5/2 way											
V-460-4E2C.P.R		5/3 way											

Blast-proof type specifications

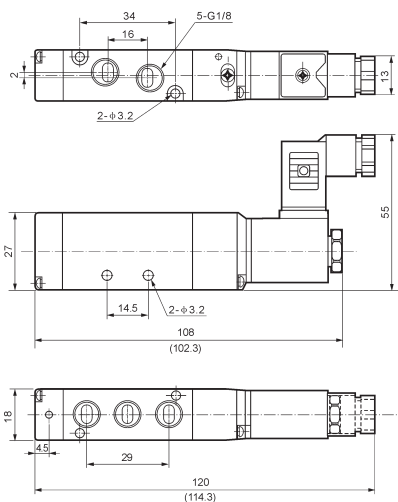
220\260\300\460 Series solenoid valve (sheet 1)

Blast-proof class	Ex m II T4
Coil voltage	AC: 110V, 220V (50/60)Hz DC: 24V
Power consumption	AC: 4.4VA DC: 5W
Allowable voltage	±10% of rated voltage
Coil insulation	Class F

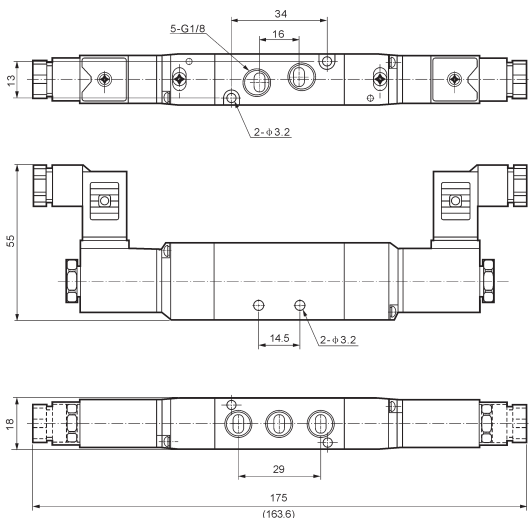
V-180 Series Solenoid Valve

● Dimensions

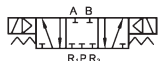
V-180-4E1



V-180-4E2



V-180-4E2C.P.R



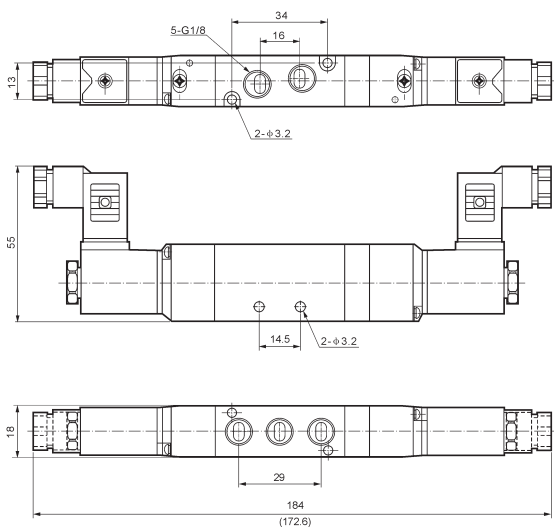
V-180-4E2C



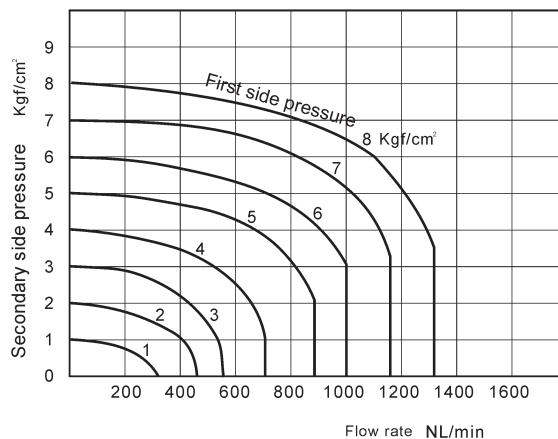
V-180-4E2P



V-180-4E2R



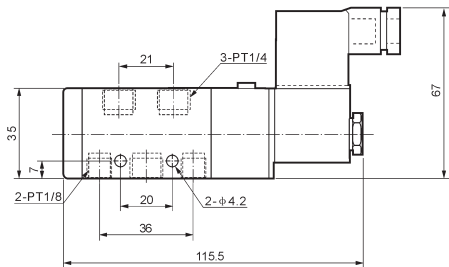
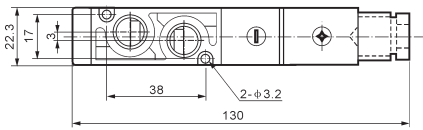
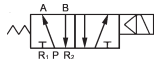
● Flow Chart



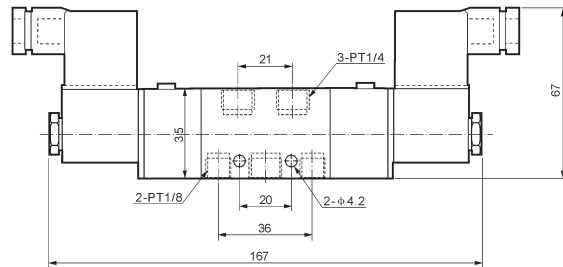
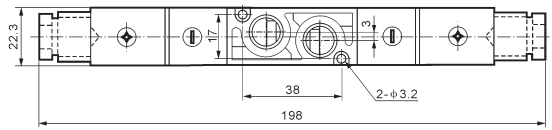
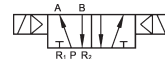
V-220 Series Solenoid Valve

● Dimensions

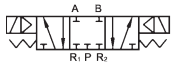
V-220-4E1



V-220-4E2



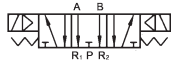
V-220-4E2C.P.R



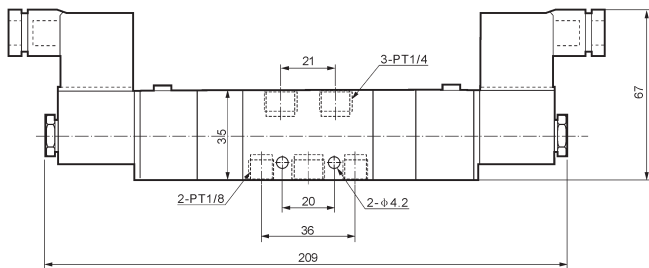
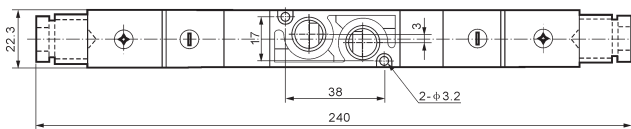
V-220-4E2C



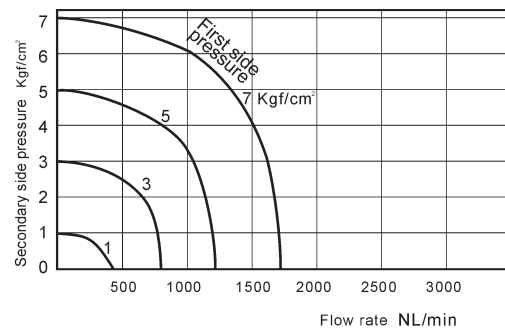
V-220-4E2P



V-220-4E2R



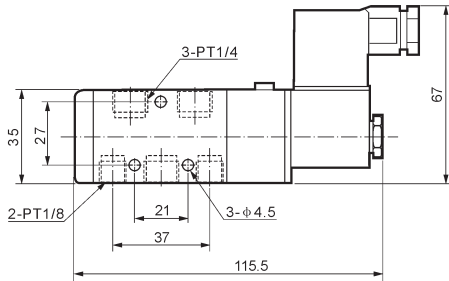
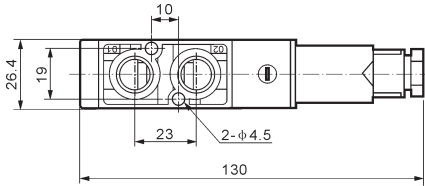
● Flow Chart



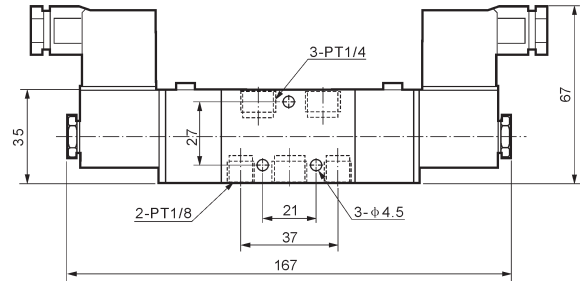
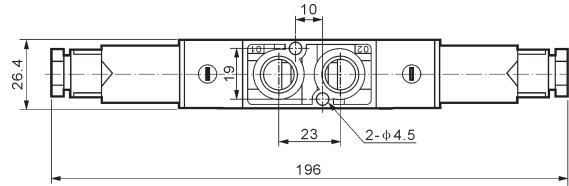
V-260 Series Solenoid Valve

● Dimensions

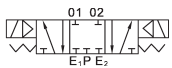
V-260-4E1



V-260-4E2



V-260-4E2C.P.R



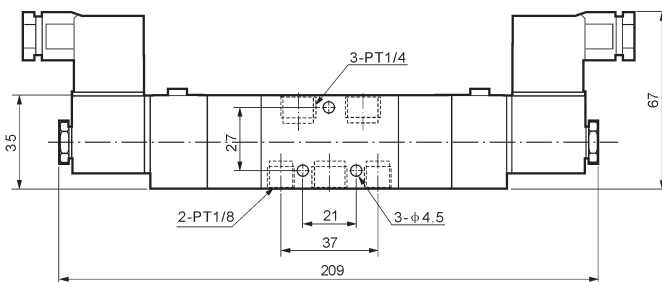
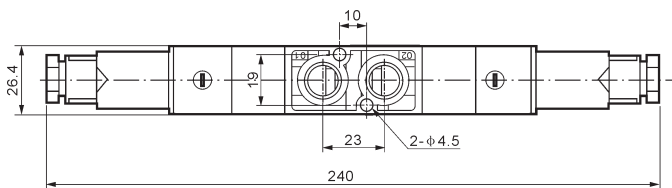
V-260-4E2C



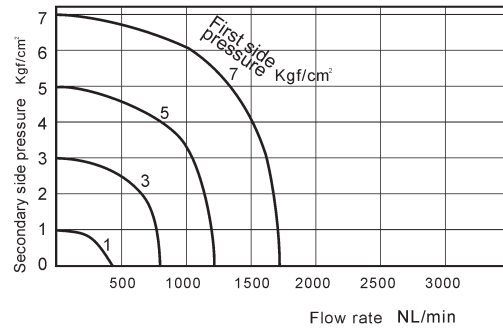
V-260-4E2P



V-260-4E2R



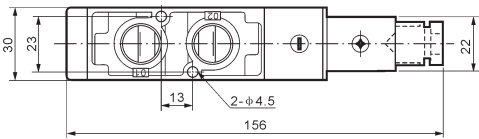
● Flow Chart



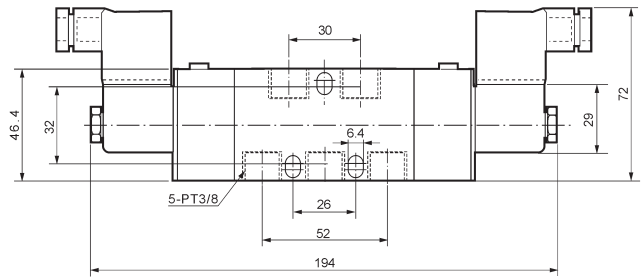
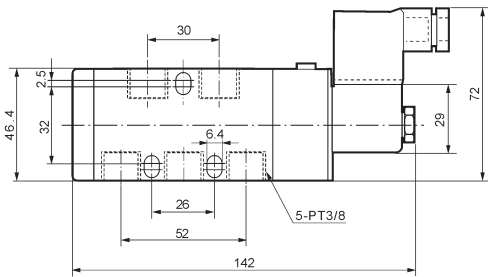
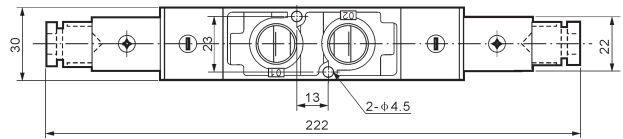
V-300 Series Solenoid Valve

● Dimensions

V-300-4E1



V-300-4E2



V-300-4E2C.P.R



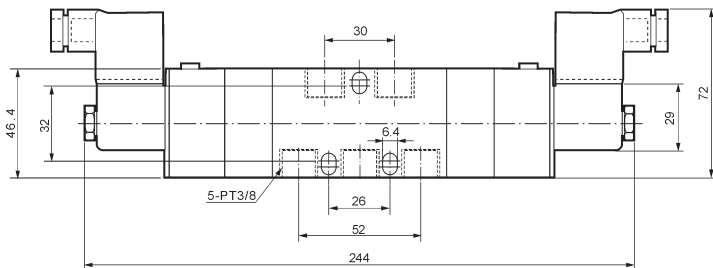
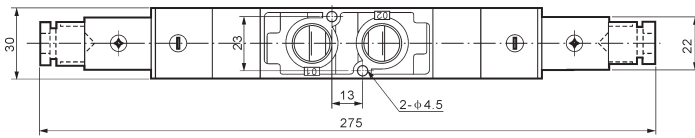
V-300-4E2C



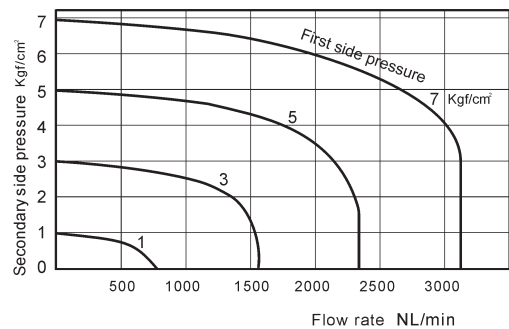
V-300-4E2P



V-300-4E2R



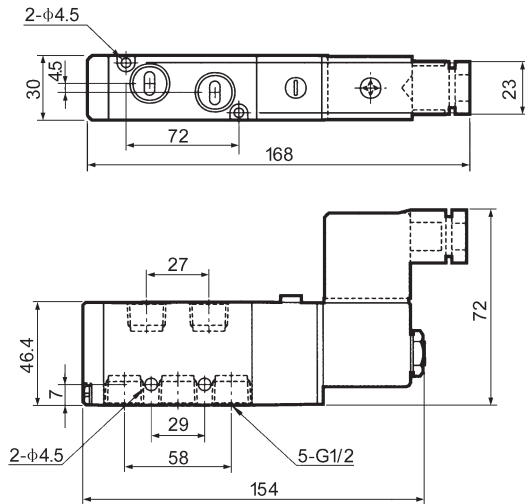
● Flow Chart



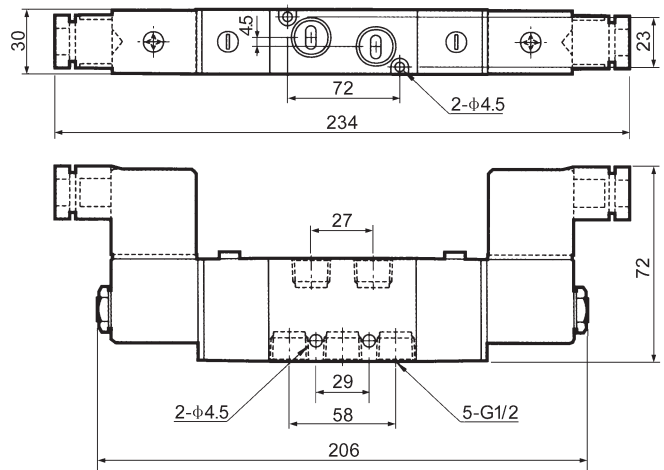
V-460 Series Solenoid Valve

● Dimensions

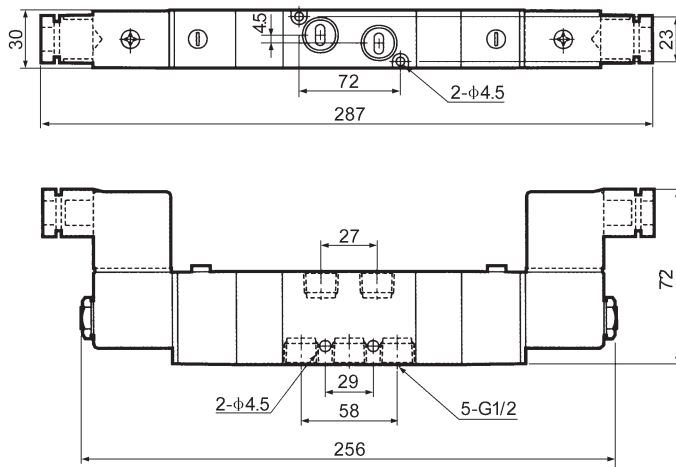
V-460-4E1



V-460-4E2



V-460-4E2C.P.R



● Flow Chart

