

## 4V400 Series Solenoid Valve, Pneumatic Control Valve



### Ordering code

<b>4V</b>	<b>4</b>	<b>10</b>	-	<b>15</b>	<b>B</b>	-	<b>AC220V</b>	-	<b>W</b>
<b>Specification</b> 4V:5/2(3) way solenoid valve 4A:5/2(3) way pneumatic control valve 3V:3/2 way solenoid valve 3A:3/2 way pneumatic control valve	<b>Series</b> 400 series	<b>Coil and places</b> 10:Single-head double-position 20:Double-head double-position 30C:Double-head three-position close centre 30E:Double-head three-position exhaust centre 30P:Double-head three-position Pressure centre		<b>Port size</b> 15: 1/2"	<b>Joint pipe form and initial state</b> Blank:Pipe connection type B:5/2 way plate connection type 5/3 way plate connection type NC:3/2 way normal close type NO:3/2 way normal open type		<b>Coil voltage</b> DC12V DC24V AC24V 50Hz/60Hz AC110V 50Hz/60Hz AC220V 50Hz/60Hz AC380V 50Hz/60Hz		<b>Electrical entry</b> Blank:Standard connector LD:Brown connector with light LD.:White connector with light W: Lead wire type

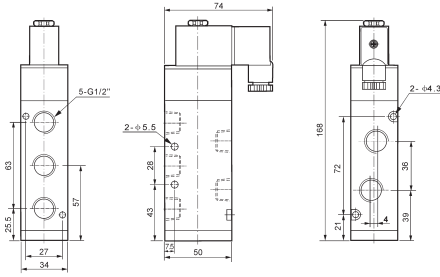
### Specification

Model	4V410-15	4V420-15	4V430C-15	4V430E-15	4V430P-15
	4A410-15	4A420-15	4A430C-15	4A430E-15	4A430P-15
Position and way NO.	5/2 way			5/3 way	
Effective area	50mm <sup>2</sup> (CV=2.79)			30mm <sup>2</sup> (CV=1.68)	
Model	3V410-15	3V420-15	3A410-15	3A420-15	
Position and way NO.	3/2 way				
Effective area	50mm <sup>2</sup> (CV=2.79)				
Port size	Air inlet=Air outlet=Exhaust=G1/2"				
Fluid	40 micron filtered air				
Operation	Inside pilot type				
Operating pressure	0.15~0.8MPa				
Max. proof pressure	1.2MPa				
Temperature	5~50℃				
Allowable voltage	± 10% of rated voltage				
Power consumption	AC: 4.5VA DC: 3W				
Coil insulation & protection grade	Class F. IP65				
Electrical entry	Lead wire or connector				
Highest action frequency	5 cycle / second				
Shortest excitation time	0.05 second				

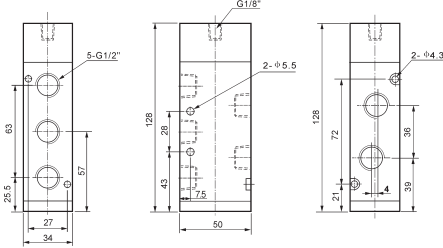
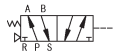
# (3)4V400 Series Solenoid Valve & (3)4A400 Pneumatic Control Valve

## ● Dimensions

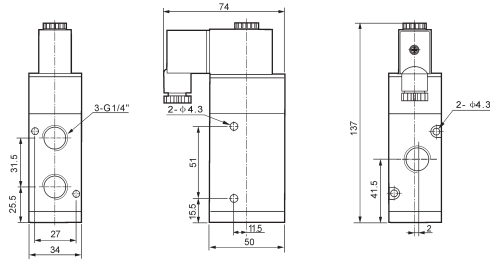
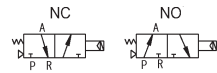
4V410-15



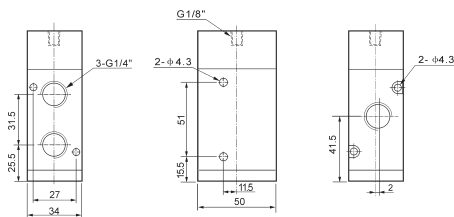
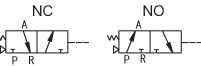
4A410-15



3V410-15



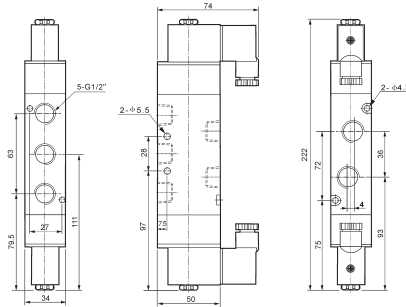
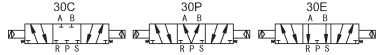
3A410-15



4V420-15



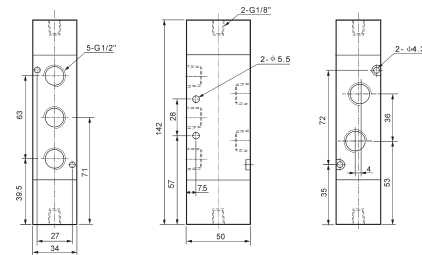
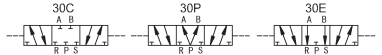
4V430-15



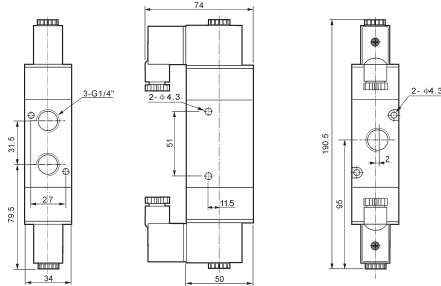
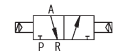
4A420-15



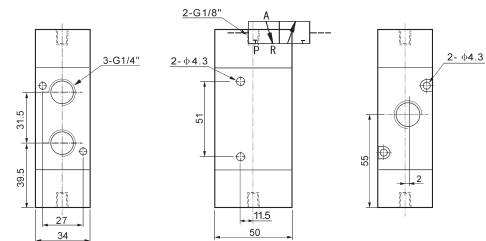
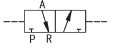
4A430-15



3V420-15



3A420-15



## 100 - 400 Series Manifold Base



### Ordering code

**100M**

-

**□F**

#### Series

100M: Base for 100 series  
200M: Base for 200 series  
300M: Base for 300 series  
400M: Base for 400 series

#### Base numbers

### Seal plate ordering code

**200M**

-

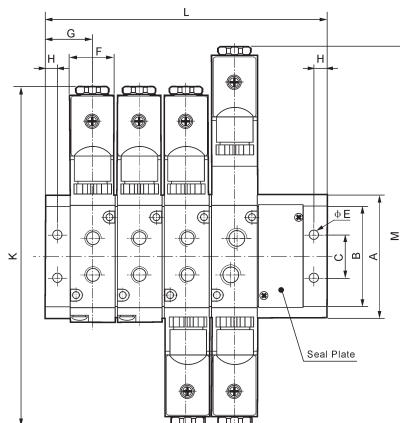
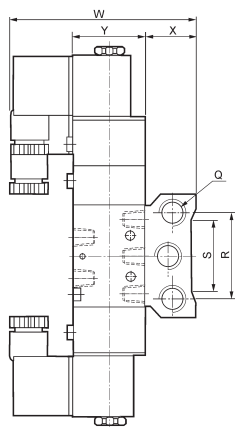
**B**

#### Series

100M: For 100 series  
200M: For 200 series  
300M: For 300 series  
400M: For 400 series

#### Seal plate

### Dimensions



Internal diameter/Symbol	A	B	C	E	F	G	H	K	L	M	Q	R	S	W	X	Y
100M-□F	58	44	20	4.2	18.3	19	5	140	$(n-1)*19+38$	155	G1/4	40	30	78.5	25	27
200M-□F	61	51	21	4.3	22.4	23	6	170	$(n-1)*23+46$	189	G1/4	43	32	92.5	26	35
300M-□F	75	65	26	4.5	27.3	27	6	189	$(n-1)*28+54$	208	G3/8	53	48	99	30	40
400M-□F	104	95	32	5.5	34.3	31.5	7	222	$(n-1)*35+63$	243	G1/2	68	67	112	38	50